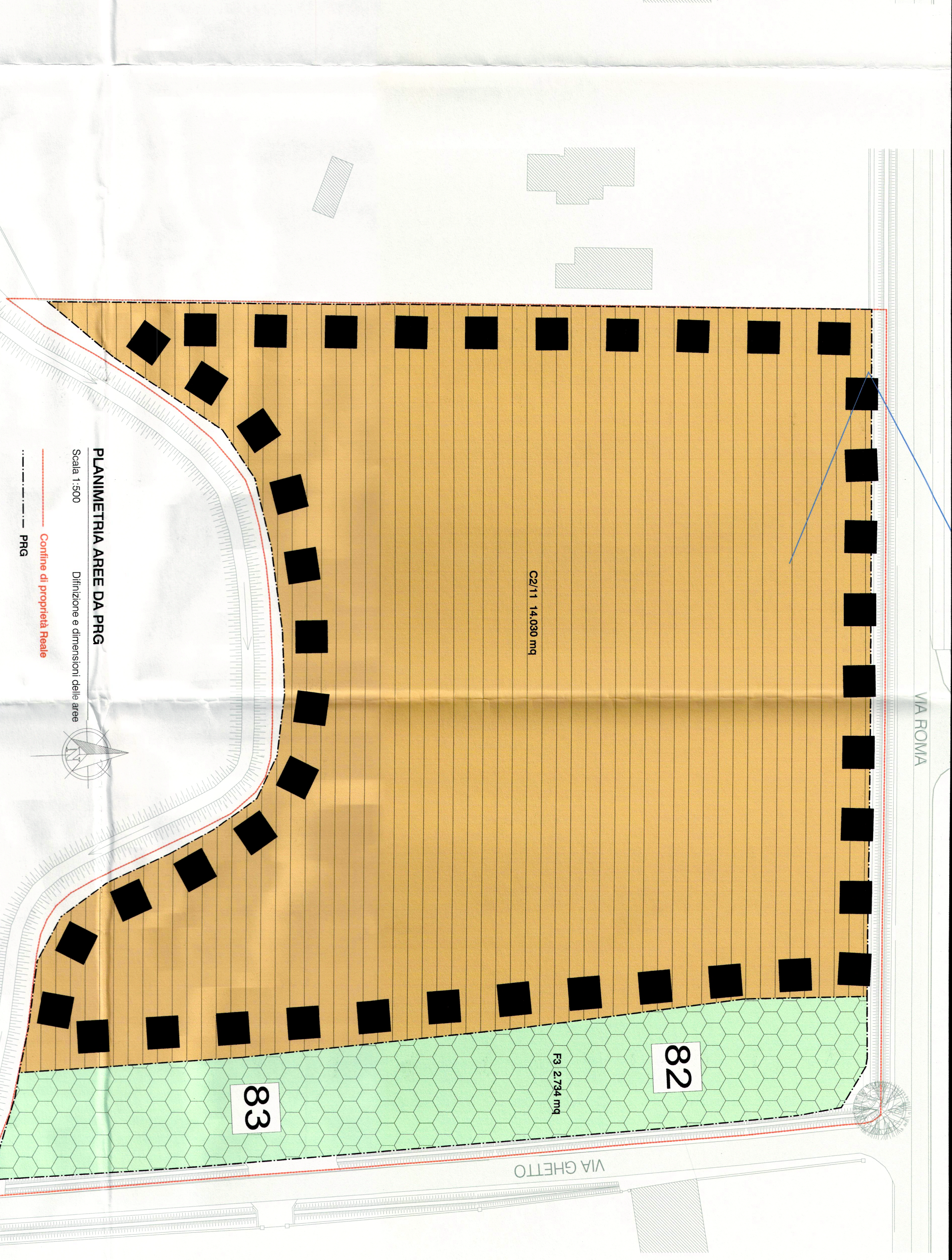
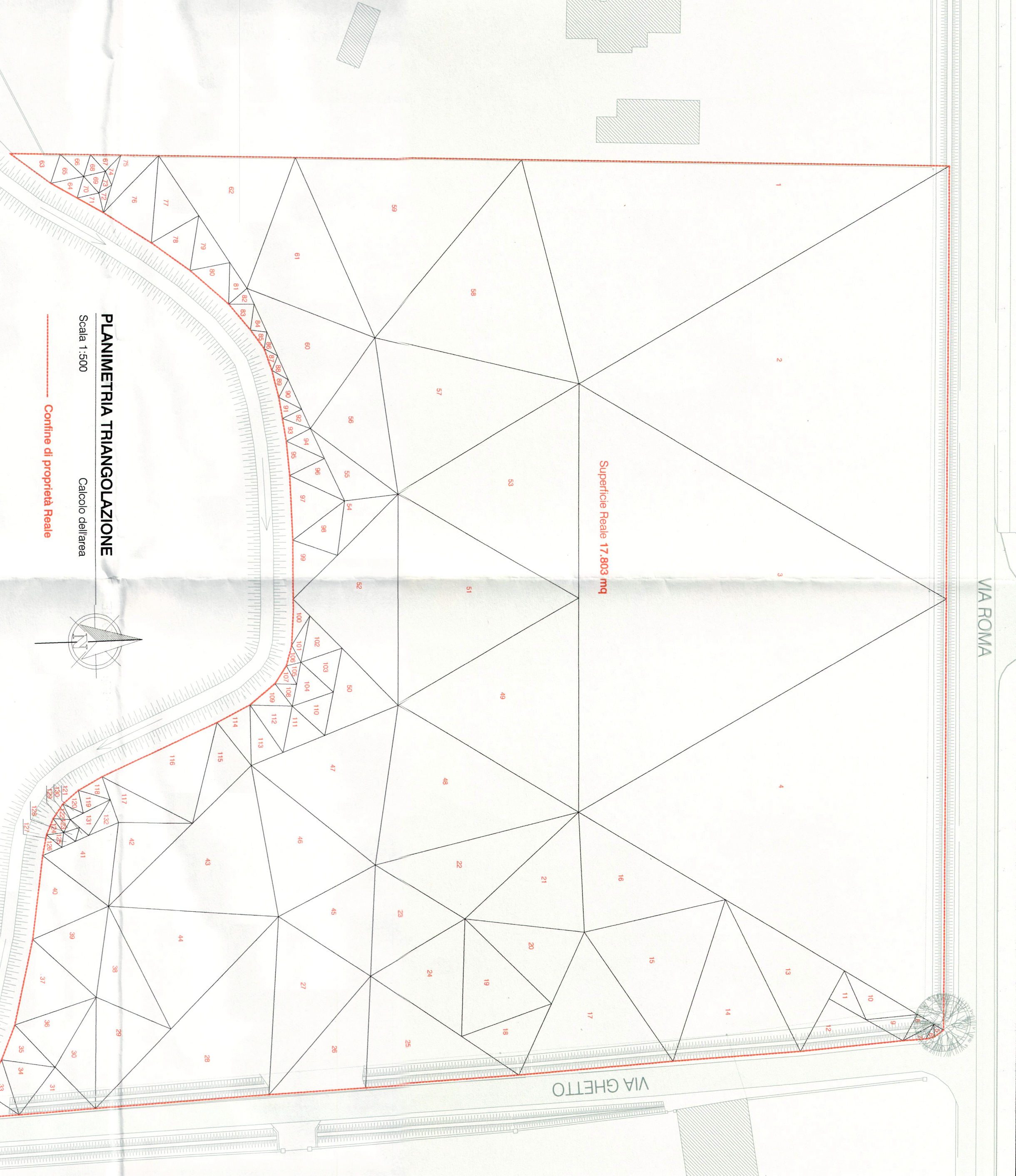




TRIANGOLI	AxX	ByY	Capotenusa	S	Area ?	P	SEMIPERIMETRO	FORMULA DI ERONE
								$\frac{1}{4} \sqrt{(a+b+c)(-a+b+c)(a-b+c)(a+b-c)}$
1	68.1194	36.1413	68.0162	96.1395	1185.89	192.843	192.843	
2	68.0162	67.3794	67.3843	101.3945	1984.35	1984.35	1984.35	
3	67.3843	66.7624	67.3843	101.0915	1966.76	1966.76	1966.76	
4	67.3843	67.3843	67.3843	101.0915	1966.76	1966.76	1966.76	
5	1.0693	1.2819	1.2819	2.7621	1.29	1.29	1.29	
6	1.0693	1.2819	1.2819	2.7621	1.29	1.29	1.29	
7	2.6219	3.6212	3.6212	5.3224	3.99	3.99	3.99	
8	5.3224	3.0951	4.0844	6.6309	7.11	7.11	7.11	
9	4.0844	6.7293	8.2198	9.8293	15.92	15.92	15.92	
10	8.2198	13.5123	8.4021	15.0671	32.7	32.7	32.7	
11	8.4021	4.9974	6.7943	10.0759	16.88	16.88	16.88	
12	13.5086	9.406	16.4608	19.6877	63.53	63.53	63.53	
13	21.9922	14.4094	26.5666	31.4811	158.34	158.34	158.34	
14	26.5666	20.3487	26.5666	36.7415	249.7	249.7	249.7	
15	26.5666	23.0123	24.6327	37.1058	262.19	262.19	262.19	
16	27.073	18.7718	23.0126	34.4287	212.76	212.76	212.76	
17	24.6327	24.6327	24.6327	36.9491	262.74	262.74	262.74	
18	10.9362	12.3163	15.22	19.2933	66.61	66.61	66.61	
19	15.22	18.376	19.1281	26.2861	130.26	130.26	130.26	
20	19.1281	12.3163	19.1281	26.2861	111.52	111.52	111.52	
21	19.1281	18.7718	24.62	31.2933	177.32	177.32	177.32	
22	24.62	33.3822	16.6911	37.3467	197.28	197.28	197.28	
23	16.6911	17.4158	17.4158	26.7614	127.57	127.57	127.57	
24	17.4158	18.376	17.4158	26.6038	135.94	135.94	135.94	
25	28.352	24.4803	17.4158	35.1241	211.74	211.74	211.74	
26	15.4733	17.4157	24.5888	28.7399	133.89	133.89	133.89	
27	24.5888	17.4157	27.8994	34.9170	211.96	211.96	211.96	
28	27.8994	27.899	41.8936	48.8060	384.74	384.74	384.74	
29	17.3373	12.625	17.3373	23.8254	104.31	104.31	104.31	
30	17.3373	12.625	17.3373	23.8254	104.31	104.31	104.31	
31	8.2321	5.3442	6.8842	15.8900	42.82	42.82	42.82	
32	6.8842	5.654	9.08	10.8141	19.48	19.48	19.48	
33	9.08	9.421	8.6251	13.5631	35.27	35.27	35.27	
34	8.6251	5.807	9.1323	11.8047	24.31	24.31	24.31	
35	9.1323	12.625	13.6868	17.7280	56.19	56.19	56.19	
36	13.6868	13.686	13.6868	20.5099	80.9	80.9	80.9	
37	13.6868	13.6868	13.6868	20.5099	80.9	80.9	80.9	
38	14.4209	12.9751	21.0833	24.5412	80.57	80.57	80.57	
39	13.6868	14.4209	13.6868	20.5099	80.9	80.9	80.9	
40	13.1857	13.1857	13.1857	19.7786	75.28	75.28	75.28	
41	13.1857	13.1857	13.1857	19.7786	75.28	75.28	75.28	
42	13.1857	13.1857	13.1857	19.7786	75.28	75.28	75.28	
43	31.9377	11.8935	18.6706	21.8935	77.69	77.69	77.69	
43	31.9377	27.2486	24.0251	41.4842	317.71	317.71	317.71	



TRIANGOLI	AxX	ByY	Capotenusa	S	Area ?	P	SEMIPERIMETRO	FORMULA DI ERONE
								$\frac{1}{4} \sqrt{(a+b+c)(-a+b+c)(a-b+c)(a+b-c)}$
47	25.1957	25.1957	25.1957	37.7951	274.91	274.91	274.91	
48	25.1957	33.3822	33.3822	46.9906	388.48	388.48	388.48	
49	33.3822	33.3822	33.3822	46.9929	480.38	480.38	480.38	
50	13.6123	12.3513	12.3517	13.4953	72.69	72.69	72.69	
51	33.2224	33.2229	33.0638	48.7546	476.41	476.41	476.41	
52	33.0638	23.5102	33.2812	48.9927	276.36	276.36	276.36	
53	33.2229	33.3812	33.3812	48.9927	480.38	480.38	480.38	
54	13.5967	8.5792	8.5792	13.3776	50.99	50.99	50.99	
55	8.5792	12.5507	17.3276	15.3788	35.58	35.58	35.58	
56	17.3276	17.3276	24.5049	29.5801	150.12	150.12	150.12	
57	24.5049	33.3812	33.3812	46.9929	380.45	380.45	380.45	
58	33.3812	36.1413	36.1413	52.8319	535.04	535.04	535.04	
59	36.1413	36.1413	30.8589	51.5708	504.27	504.27	504.27	
60	17.3276	23.9141	21.8205	31.5311	182	182	182	
61	21.8205	30.8589	21.8205	25.1163	224.09	224.09	224.09	
62	8.0134	8.0134	4.8108	10.4188	18.39	18.39	18.39	
63	4.8108	3.5621	5.3828	6.8779	8.39	8.39	8.39	
64	4.8108	5.3828	5.1188	7.6562	11.21	11.21	11.21	
65	5.1188	4.8108	3.6221	6.7455	8.22	8.22	8.22	
66	4.8108	3.5621	3.5621	6.0147	6.33	6.33	6.33	
67	3.5621	3.5621	3.5621	5.3432	5.49	5.49	5.49	
68	3.5621	3.5621	3.5621	5.3432	5.49	5.49	5.49	
69	3.5621	3.5621	3.5621	5.3432	5.49	5.49	5.49	
70	3.5621	3.5621	3.5621	5.3432	5.49	5.49	5.49	
71	3.5621	3.5621	3.5621	5.3432	5.49	5.49	5.49	
72	3.5621	3.5621	3.5621	5.3432	5.49	5.49	5.49	
73	2.4135	2.4134	4.5246	5.0643	3.88	3.88	3.88	
74	2.4135	3.5599	2.4135	4.9492	4.02	4.02	4.02	
75	3.5599	6.0452	12.3825	14.0472	27.46	27.46	27.46	
76	12.3825	9.0346	13.7143	18.8906	49.22	49.22	49.22	
77	13.7143	11.4013	8.6566	11.9947	29.38	29.38	29.38	
78	8.6566	7.5285	8.6566	12.4299	28.34	28.34	28.34	
79	8.6566	8.4423	6.4815	10.5445	20.5	20.5	20.5	
80	6.4815	8.106	6.4815	10.5445	20.5	20.5	20.5	
81	6.4815	4.8728	3.8077	4.8728	9.23	9.23	9.23	
82	3.8077	2.898	4.0693	6.2146	4.96	4.96	4.96	
83	4.0693	5.3085	4.0693	6.2146	4.96	4.96	4.96	
84	4.0693	4.8012	2.6148	4.8012	3.49	3.49	3.49	
85	2.6148	4.0591	2.3866	4.4895	3.49	3.49	3.49	
86	2.6148	4.0591	2.3866	4.4895	3.49	3.49	3.49	
87	2.3866	3.4891	2.3866	4.1279	2.84	2.84	2.84	
88	2.3866	3.4891	2.3866	4.1279	2.84	2.84	2.84	
89	2.3866	3.4891	2.3866	4.1279	2.84	2.84	2.84	
TOTALE					17803.13			

TRIANGOLI	AxX	ByY	Capotenusa	S	Area ?	P	SEMIPERIMETRO	FORMULA DI ERONE
								$\frac{1}{4} \sqrt{(a+b+c)(-a+b+c)(a-b+c)(a+b-c)}$
94	4.3164	5.1557	6.6599	8.0660	11.12	11.12	11.12	
95	6.6599	5.3936	6.148	9.1013	12.74	12.74	12.74	
96	5.3936	7.395	10.2793	11.5808	22.74	22.74	22.74	
97	6.148	10.089	10.2793	13.1838	43.15	43.15	43.15	
98	10.089	8.5792	7.5121	9.9139	31.64	31.64	31.64	
99	7.5121	9.3744	9.3744	13.4002	33.28	33.28	33.28	
100	7.5121	3.7439	5.4637	8.2324	9.99	9.99	9.99	
101	5.4637	3.0162	7.4016	7.9408	7.23	7.23	7.23	
102	7.4016	7.1697	6.9204	10.7459	22.17	22.17	22.17	
103	6.9204	6.9217	6.9163	10.3792	20.73	20.73	20.73	
104	6.9163	6.9163	6.9163	10.3745	20.71	20.71	20.71	
105	2.3703	3.0162	3.2915	4.3390	3.44	3.44	3.44	
106	3.2915	3.0162	3.2915	4.3390	3.44	3.44	3.44	
107	3.0162	3.4524	4.4587	5.6940	4.81	4.81	4.81	
108	4.4587	3.4524	3.4524	4.4587	5.91	5.91	5.91	
109	3.4524	5.1553	6.7436	8.1788	11.49	11.49	11.49	
110	5.1553	6.8905	6.9035	10.3532	20.64	20.64	20.64	
111	6.9035	7.165	7.3643	10.7164	22.06	22.06	22.06	
112	7.3643	6.7436	9.1227	11.6133	24.49	24.49	24.49	
113	9.1227	5.4605	9.455	12.0141	24.16	24.16	24.16	
114	5.4605	5.928	8.6716	12.0273	25.16	25.16	25.16	
115	8.6716	13.0231	16.2254	18.9601	56.28	56.28	56.28	
116	16.2254	20.244	16.2254	26.3474	128.36	128.36	128.36	
117	16.2254	11.8555	7.6245	17.8527	42.21	42.21	42.21	
118	4.3304	3.8126	5.3009	6.8902	8.15	8.15	8.15	
119	5.3009	4.825	3.6544	6.8902	8.15	8.15	8.15	
120	3.6544	3.314	3.5733	5.2719	5.37	5.37	5.37	
121	3.5733	2.688	2.7173	4.2805	3.78	3.78	3.78	
122	2.7173	2.7173	2.7537	4.0842	3.72	3.72	3.72	
123	2.7537	2.3104	2.7537	3.9089	3.28	3.28	3.28	
124	2.7537	2.7537	2.7537	4.1306	3.78	3.78	3.78	
125	2.7537	2.3157	3.1102	4.0898	3.68	3.68	3.68	